



# BEARS ON THE BRAIN



Animals leave behind tracks in soft places like snow, sand, mud, or dirt. The size and shape of the print and the number of toes are clues about what type of animal passed by. By looking closely at the prints, a keen observer can tell what animals have visited.

What animals live near you? Research the prints those animals make and keep an eye out for their tracks. But remember—never get close to wild animals!

## MATCH THE TRACKS

Here's a game that will help you become an awesome animal tracks observer!  
For 2 or more players

### What you need:

- Track Finders chart
- A set of animal tracks matching cards



### Directions:

1. Cut out the animal tracks cards on the final page.
2. Shuffle the cards and place them facedown one next to another in a square.
3. Each player takes a turn flipping two cards face-up.
  - If a player turns over two matching prints, the player should use the Track Finder's chart to identify the animal who created the track and keep the cards.
  - All players should look carefully at the cards, noticing the details about the animal print.
  - If the cards are not a match, turn them facedown before the next player begins their turn.
4. Once all of the matching tracks have been paired, the game is over.
5. Each player counts the number of pairs they collected.  
The player with the most pairs wins.







# Track Finder's Chart



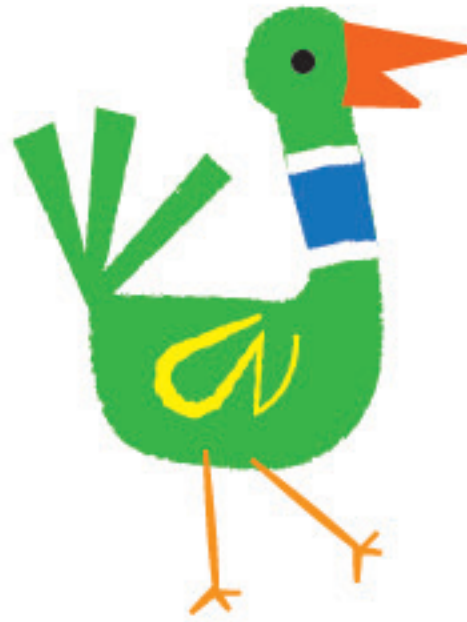
**Cat**



**Deer**



**Duck**



**Bird**



**Bear**



**Rabbit**



**Frog**



**Mouse**



**Fox**



**Squirrel**

